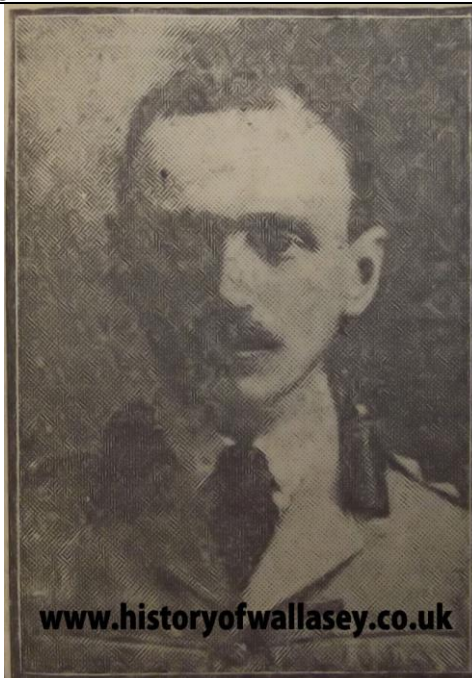


Surname	Weatherhead (Wetherhead)
Forename(s)	George Ernest
Initials	G E
Age	39
Honours/Awards	
Date died	09/05/1915
Rank	Captain
Regiment	King's Own (Royal Lancaster Regiment)
Unit/Squadron	2 nd Bn.
Service Number	
Cemetery/Memorial	Ypres Town Cemetery Extension
Grave Reference	III.H.11.
Further Information	Son of the Rev. Canon Robert Johnston Weatherhead and Anna Bagot Weatherhead, of Seacombe, Cheshire.



News Report

Son Of The Late Canon

Much sympathy will be felt throughout the district for Mrs. Weatherhead, of Mount Road, New Brighton, widow of the late Canon Weatherhead, of Seacombe, in the loss of her eldest son, Captain and Adjutant George Ernest Weatherhead, of the 2nd Battalion the King's Own (Royal Lancaster) Regiment.

Mrs. Weatherhead has just received the sad news that her son was killed in action near Ypres on Sunday last. It will be remembered that she had three sons serving with his Majesty's Forces, one of whom, Andrew Weatherhead, has recently recovered from wounds, and is now on service in the commissioned ranks of the K.O.R.L after having served as a private in the Liverpool Scottish. His oldest brother, the deceased, had served in the Army for many years, and was well-known in Wallasey.

A memorial service will be held at the Seacombe Parish Church this afternoon in

memory of the deceased.

Born on May 25th, 1875, Captain Weatherhead was educated at Elleray Park School, New Brighton, Monmouth Grammar School and Keble College, Oxford, where in 1898, he took his degree, with honours in history. He joined the King's Own Royal Lancaster Regiment as second-lieutenant from the ranks of the Imperial Yeomanry in 1901. He got his company in September, 1907. Since October, 1912, he had been adjutant of the regiment. Between May, 1907 and March, 1912, Captain Weatherhead was employed with the West African Frontier Force. For his services during the South African War he had the Queen's medal with four clasps.

References and Acknowledgments

Commonwealth War Grave Commission
Wallasey Central Library – Reference Library

[back](#)